

---

## Product Datasheet

### Akt (phospho-S473) antibody (orb344404)

**Description**

Akt (phospho-S473) antibody

**Species/Host**

Mouse

**Reactivity**

Human, Monkey, Mouse, Rat

**Conjugation**

Unconjugated

**Tested**

ELISA, FC, IF, IHC, IP, Multiplex Assay, WB

**Applications**
**Immunogen**

Anti-AKT pS473 antibody was produced by repeated immunizations with a synthetic peptide corresponding to residues surrounding S473 of human AKT1 protein, followed by hybridoma development

**Preservatives**

0.01% (w/v) Sodium Azide

**Form/Appearance**

Liquid (sterile filtered)

**Concentration**

1.0 mg/mL

**Storage**

Store vial at -20° C or below prior to opening. This vial contains a relatively low volume of reagent (25 µL). To minimize loss of volume dilute 1:10 by adding 225 µL of the buffer stated above directly to the vial. Recap, mix thoroughly and briefly centrifuge to collect the volume at the bottom of the vial. Use this intermediate dilution when calculating final dilutions as recommended below. Store the vial at -20°C or below after dilution. Avoid cycles of freezing and thawing.

**Note**

For research use only

**Application notes**

This monoclonal antibody is tested in ELISA, immunofluorescence, immunohistochemistry, and western blotting. Expect a band approximately 56 kDa in size corresponding to phosphorylated AKT protein by western blotting in the appropriate cell lysate or extract. This phospho-specific monoclonal antibody reacts with human and mouse AKT pS473 and shows minimal reactivity by ELISA against the non-phosphorylated form of the immunizing peptide. Specific conditions for reactivity should be optimized by the end user. For immunohistochemistry use formalin-fixed paraffin-embedded sections. No pre-treatment of sample is required.

**Isotype**

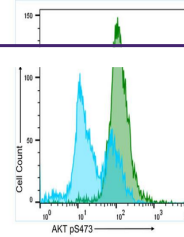
IgG1

**Clonality**

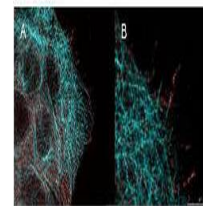
Monoclonal

**Purity**

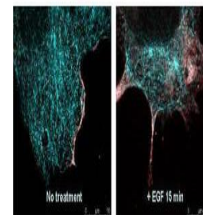
Anti-AKT pS473 (MOUSE) Monoclonal Antibody was



Flow Cytometry results of Anti-AKT pS473...



High resolution STED immunofluorescence



Immunofluorescence confocal microscopy