

## Product Datasheet

### NFkB p65 antibody (orb344389)

**Description**

NFkB p65 antibody

**Species/Host**

Mouse

**Reactivity**

Human

**Conjugation**

Unconjugated

**Tested**

ELISA, IF, IHC, WB

**Applications**
**Immunogen**

NFkB p65 (Rel A) peptide corresponding to a region near the C-terminus of the human protein conjugated to Keyhole Limpet Hemocyanin (KLH).

**Preservatives**

0.02 M Potassium Phosphate, 0.15 M Sodium Chloride, pH 7.2

**Form/Appearance**

Liquid (sterile filtered)

**Concentration**

0.98 mg/mL

**Storage**

Store NF-kB p65 Antibody at -20° C prior to opening. Aliquot contents and freeze at -20° C or below for extended storage. Avoid cycles of freezing and thawing. Centrifuge product if not completely clear after standing at room temperature. This product is stable for several weeks at 4° C as an undiluted liquid. Dilute only prior to immediate use.

**Note**

For research use only

**Application notes**

Anti-NF-kB p65 Antibody is a mouse monoclonal antibody directed against NFkB p65 (Rel A) and recognizes a 65 kD band by Western blot against HeLa whole cell lysate. Control peptide (100-4165p) is sold separately. This product tested in WB, ICC, IHC, and IF.

**Isotype**

IgG2a

**Clonality**

Monoclonal

**Purity**

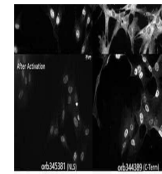
Anti-NF-kB p65 Antibody was purified from concentrated tissue culture supernate by Protein A chromatography and showed a single band by IEP (immunoelectrophoresis) when tested with anti-mouse antibody. Reactivity was confirmed by ELISA against peptide conjugated carrier protein and by Western blot against HeLa whole cell lysate.

**Uniprot ID**
[Q04206](#)
**NCBI**
[223468676](#)
**Dilution Range**

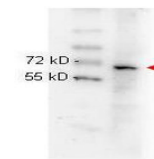
ELISA: 1:50,000-1:100,000, IHC: 1:200-1:600, IF: 1:5,000, WB: 1:1,000-1:5,000

**Expiration Date**

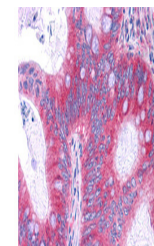
12 months from date of receipt.



Anti NFkB monoclonal antibody - Immuno...



Biorbyt anti NFkB p65 (Rel A) monoclonal...



Biorbyt Antibody (p/n orb344389) has bee...