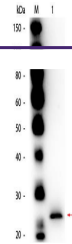


---

## Product Datasheet

### Papain antibody (Biotin) (orb344380)

<b>Description</b>	Papain antibody (Biotin)
<b>Species/Host</b>	Goat
<b>Reactivity</b>	Plant
<b>Conjugation</b>	Biotin
<b>Tested Applications</b>	ELISA, IP, WB
<b>Immunogen</b>	Papain [Carica papaya]
<b>Preservatives</b>	0.01% (w/v) Sodium Azide
<b>Form/Appearance</b>	Liquid (sterile filtered)
<b>Concentration</b>	1.0 mg/mL
<b>Storage</b>	Store vial at -20° C or below prior to opening. This vial contains a relatively low volume of reagent (25 µL). To minimize loss of volume dilute 1:10 by adding 225 µL of the buffer stated above directly to the vial. Recap, mix thoroughly and briefly centrifuge to collect the volume at the bottom of the vial. Use this intermediate dilution when calculating final dilutions as recommended below. Store the vial at -20°C or below after dilution. Avoid cycles of freezing and thawing.
<b>Note</b>	For research use only
<b>Application notes</b>	Anti-Papain Biotin antibody has been tested by ELISA and western blot. Expect band at 38.9 kDa in appropriate cell lysate or extract. Specific conditions for reactivity should be optimized by the end user.
<b>Isotype</b>	IgG
<b>Clonality</b>	Polyclonal
<b>Purity</b>	Anti-Papain antibody is an IgG fraction antibody purified from monospecific antiserum by a multi-step process which includes delipidation, salt fractionation and ion exchange chromatography followed by extensive dialysis against the buffer stated above. Assay by immunoelectrophoresis resulted in a single precipitin arc against anti-Biotin, anti-Goat Serum as well as purified and partially purified Papain [Carica papaya]. Cross reactivity against Papain from other sources may occur but have not been specifically determined.
<b>Uniprot ID</b>	<b>P00784</b>
<b>NCBI</b>	<b>P00784.1</b>
<b>Dilution Range</b>	ELISA: 1:1,000 - 1:10,000, IP: User Optimized, WB: 1:500



Western Blot of Goat anti-Papain Antibod...