

## Product Datasheet

### Papain Antibody Biotin Conjugated (orb344379)

<b>Description</b>	Papain antibody (Biotin)
<b>Species/Host</b>	Goat
<b>Reactivity</b>	Plant
<b>Conjugation</b>	Biotin
<b>Tested Applications</b>	ELISA, WB
<b>Immunogen</b>	Papain [Carica papaya]
<b>Preservatives</b>	0.01% (w/v) Sodium Azide
<b>Form/Appearance</b>	Lyophilized
<b>Concentration</b>	1.0 mg/mL
<b>Storage</b>	Store vial at 4° C prior to restoration. For extended storage aliquot contents and freeze at -20° C or below. Avoid cycles of freezing and thawing. Centrifuge product if not completely clear after standing at room temperature. This product is stable for several weeks at 4° C as an undiluted liquid. Dilute only prior to immediate use.
<b>Note</b>	For research use only
<b>Application notes</b>	Anti-Papain Biotin antibody has been tested by ELISA and western blot. Expect band at 38.9 kDa in appropriate cell lysate or extract. Specific conditions for reactivity should be optimized by the end user.
<b>Isotype</b>	IgG
<b>Clonality</b>	Polyclonal

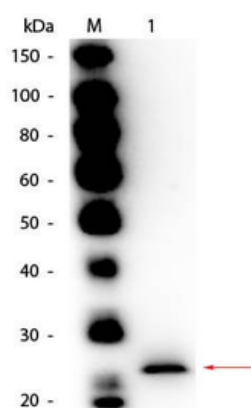
#### Biorbyt Ltd.

7 Signet Court, Swann's Road,  
Cambridge, CB5 8LA, United Kingdom  
Email: [info@biorbyt.com](mailto:info@biorbyt.com), [support@biorbyt.com](mailto:support@biorbyt.com)  
Phone: [+44 \(0\) 1223 859-353](tel:+44(0)1223859353) | Fax: [+1 \(415\) 651-8558](tel:+1(415)6518558)

#### Biorbyt LLC.

68 TW Alexander Drive,  
Durham, NC, 27713, United States  
Email: [info@biorbyt.com](mailto:info@biorbyt.com), [support@biorbyt.com](mailto:support@biorbyt.com)  
Phone: [+1 \(415\) 906-5211](tel:+1(415)9065211) | Fax: [+1 \(415\) 651-8558](tel:+1(415)6518558)

<b>Purity</b>	Anti-Papain antibody is an IgG fraction antibody purified from monospecific antiserum by a multi-step process which includes delipidation, salt fractionation and ion exchange chromatography followed by extensive dialysis against the buffer stated above. Assay by immunoelectrophoresis resulted in a single precipitin arc against anti-Biotin, anti-Goat Serum as well as purified and partially purified Papain [Carica papaya]. Cross reactivity against Papain from other sources may occur but have not been specifically determined.
<b>Uniprot ID</b>	<b>P00784</b>
<b>NCBI</b>	<b>P00784.1</b>
<b>Dilution Range</b>	ELISA: 1:1,000 - 1:10,000, WB: 1:500 - 1:2,000
<b>Expiration Date</b>	12 months from date of receipt.



Western Blot of Goat anti-Papain Antibody Biotin Conjugated. Lane 1: Papain. Load: 50 ng per lane. Primary antibody: Goat anti-Papain Antibody Biotin Conjugated at 1:1000 overnight at 4°C. Secondary antibody: HRP Streptavidin (p/n orb348767) secondary antibody at 1:40000 for 30 minutes at RT. Block: orb348637 for 30 minutes at RT. Predicted/Observed size: 23 kDa, 23 kDa for Papain.

#### Biorbyt Ltd.

7 Signet Court, Swann's Road,  
Cambridge, CB5 8LA, United Kingdom  
Email: [info@biorbyt.com](mailto:info@biorbyt.com), [support@biorbyt.com](mailto:support@biorbyt.com)  
Phone: [+44 \(0\) 1223 859-353](tel:+44(0)1223859353) | Fax: [+1 \(415\) 651-8558](tel:+1(415)6518558)

#### Biorbyt LLC.

68 TW Alexander Drive,  
Durham, NC, 27713, United States  
Email: [info@biorbyt.com](mailto:info@biorbyt.com), [support@biorbyt.com](mailto:support@biorbyt.com)  
Phone: [+1 \(415\) 906-5211](tel:+1(415)9065211) | Fax: [+1 \(415\) 651-8558](tel:+1(415)6518558)