

---

## Product Datasheet

### Lactate Dehydrogenase antibody (Biotin) (orb344377)

**Description**

Lactate Dehydrogenase antibody (Biotin)

**Species/Host**

Goat

**Reactivity**

Rabbit

**Conjugation**

Biotin

**Tested Applications**

ELISA, IF, IP, WB

**Immunogen**

Lactate Dehydrogenase [full length protein isolated from rabbit muscle]

**Preservatives**

0.01% (w/v) Sodium Azide

**Form/Appearance**

Lyophilized

**Concentration**

1.0 mg/mL

**Storage**

Store vial at 4° C prior to restoration. For extended storage aliquot contents and freeze at -20° C or below. Avoid cycles of freezing and thawing. Centrifuge product if not completely clear after standing at room temperature. This product is stable for several weeks at 4° C as an undiluted liquid. Dilute only prior to immediate use.

**Note**

For research use only

**Application notes**

Anti-Lactate Dehydrogenase Biotin antibody has been tested by ELISA, Western blot, and immunofluorescence. This antibody is assayed against 1.0 µg of Lactate Dehydrogenase in a standard capture ELISA using Peroxidase Conjugated Streptavidin #S000-03 and ABTS (2,2'-azino-bis-[3-ethylbenthiazoline-6-sulfonic acid]) code # ABTS-100 as a substrate for 30 minutes at room temperature. A working dilution of 1:4,000 to 1:20,000 of the reconstitution concentration is suggested for this product.

**Isotype**

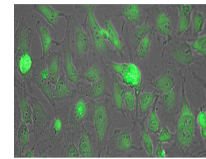
IgG

**Clonality**

Polyclonal

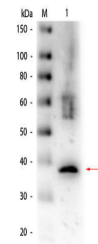
**Purity**

Anti-lactate dehydrogenase antibody is an IgG fraction antibody purified from monospecific antiserum by a multi-step process which includes delipidation, salt fractionation and ion exchange chromatography followed by extensive dialysis against the buffer stated above. Assay by immunoelectrophoresis resulted in a single precipitin arc against anti-

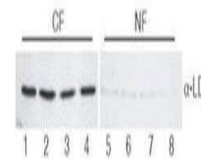


Immunofluorescence Microscopy of Biotin

...



Western Blot of Goat anti-Lactate Dehydr...



Western Blot of Goat Anti-Lactate Dehydr...