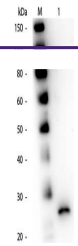

Product Datasheet

Papain antibody (orb344341)

Description	Papain antibody
Species/Host	Goat
Reactivity	Plant
Conjugation	Unconjugated
Tested Applications	ELISA, IHC, WB
Immunogen	Anti-Papain Antibody was produced by repeated immunizations with pork Papain protein isolated from papaya.
Preservatives	0.01% (w/v) Sodium Azide
Form/Appearance	Liquid (sterile filtered)
Concentration	1.0 mg/ml
Storage	Store vial at -20° C or below prior to opening. This vial contains a relatively low volume of reagent (25 µL). To minimize loss of volume dilute 1:10 by adding 225 µL of the buffer stated above directly to the vial. Recap, mix thoroughly and briefly centrifuge to collect the volume at the bottom of the vial. Use this intermediate dilution when calculating final dilutions as recommended below. Store the vial at -20°C or below after dilution. Avoid cycles of freezing and thawing.
Note	For research use only
Application notes	Anti-Papain antibody has been tested by western blotting to detect a single band of the expected apparent molecular weight and for ELISA. Researchers should determine optimal titers for applications that are not stated below.
Isotype	IgG
Clonality	Polyclonal
Purity	Anti-Papain antibody is an IgG fraction antibody purified from monospecific antiserum by a multi-step process which includes delipidation, salt fractionation and ion exchange chromatography followed by extensive dialysis against the buffer stated above. Assay by immunoelectrophoresis resulted in a single precipitin arc against anti-Goat Serum as well as purified and partially purified Papain [Carica papaya]. Cross reactivity against Papain from other sources may occur but has not been specifically determined.
Uniprot ID	P00784
NCBI	P00784.1



Western Blot of Goat anti-Papain Antibod...