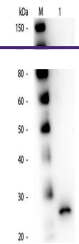


---

## Product Datasheet

### Papain antibody (orb344340)

<b>Description</b>	Papain antibody
<b>Species/Host</b>	Goat
<b>Reactivity</b>	Plant
<b>Conjugation</b>	Unconjugated
<b>Tested Applications</b>	ELISA, IHC, WB
<b>Immunogen</b>	Anti-Papain Antibody was produced by repeated immunizations with pork Papain protein isolated from papaya.
<b>Preservatives</b>	0.01% (w/v) Sodium Azide
<b>Form/Appearance</b>	Lyophilized
<b>Concentration</b>	1.0 mg/ml
<b>Storage</b>	Store vial at 4° C prior to restoration. For extended storage aliquot contents and freeze at -20° C or below. Avoid cycles of freezing and thawing. Centrifuge product if not completely clear after standing at room temperature. This product is stable for several weeks at 4° C as an undiluted liquid. Dilute only prior to immediate use.
<b>Note</b>	For research use only
<b>Application notes</b>	Anti-Papain antibody has been tested by western blotting to detect a single band of the expected apparent molecular weight and for ELISA. Researchers should determine optimal titers for applications that are not stated below.
<b>Isotype</b>	IgG
<b>Clonality</b>	Polyclonal
<b>Purity</b>	Anti-Papain antibody is an IgG fraction antibody purified from monospecific antiserum by a multi-step process which includes delipidation, salt fractionation and ion exchange chromatography followed by extensive dialysis against the buffer stated above. Assay by immunoelectrophoresis resulted in a single precipitin arc against anti-Goat Serum as well as purified and partially purified Papain [Carica papaya]. Cross reactivity against Papain from other sources may occur but has not been specifically determined.
<b>Uniprot ID</b>	<b>P00784</b>
<b>NCBI</b>	<b>P00784.1</b>
<b>Dilution Range</b>	ELISA: 1:10,000 - 1:50,000, IHC: 1:500 - 1:3,000, WB: 1:1,000 - 1:5,000



Western Blot of Goat anti-Papain Antibod...