
Product Datasheet

Glucose Dehydrogenase antibody (Biotin) (orb344307)

Description

Glucose Dehydrogenase antibody (Biotin)


Species/Host

Goat

Reactivity

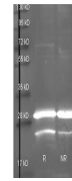
Bacteria

Conjugation

Biotin

Tested Applications

ELISA, WB



Biorbyt Goat anti Glucose Dehydrogenase

...

Immunogen

Glucose Dehydrogenase [Bacillus species]

Preservatives

0.01% (w/v) Sodium Azide

Form/Appearance

Liquid (sterile filtered)

Concentration

1.0 mg/mL

Storage

Store vial at -20° C or below prior to opening. This vial contains a relatively low volume of reagent (25 µL). To minimize loss of volume dilute 1:10 by adding 225 µL of the buffer stated above directly to the vial. Recap, mix thoroughly and briefly centrifuge to collect the volume at the bottom of the vial. Use this intermediate dilution when calculating final dilutions as recommended below. Store the vial at -20°C or below after dilution. Avoid cycles of freezing and thawing.

Note

For research use only

Application notes

Anti-Glucose Dehydrogenase has been assayed against 1.0 ug of Glucose Dehydrogenase in a standard capture ELISA using Peroxidase Conjugated Streptavidin #S000-03 and ABTS (2,2'-azino-bis-[3-ethylbenthiazoline-6-sulfonic acid]) code # ABTS-100 as a substrate for 30 minutes at room temperature. A working dilution of 1:4,000 to 1:20,000 of the reconstitution concentration is suggested for this product.

Isotype

IgG

Clonality

Polyclonal

Purity

Anti-Glucose Dehydrogenase is an IgG fraction antibody purified from monospecific antiserum by a multi-step process which includes delipidation, salt fractionation and ion exchange chromatography followed by extensive dialysis against the buffer stated above. Assay by immunoelectrophoresis resulted in a single precipitin arc against anti-Biotin, anti-Goat Serum as well as purified and partially purified Glucose Dehydrogenase [Bacillus species]. Cross reactivity against Glucose

Biorbyt Ltd.

7 Signet Court, Swann's Road, Cambridge, CB5 8LA, United Kingdom

 Email: info@biorbyt.com | Phone: +44 (0) 1223 859-353 | Fax: +44 (0)1223 280 240

Biorbyt LLC.

68 TW Alexander Drive
Research Triangle Park
Durham, North Carolina
27709, United States

 Email: info@biorbyt.com | Phone: +1 (415) 906-5211 | Fax: +1 (415) 651-8558

Dilution Range

ELISA: 1:5,000 - 1:25,000, WB: 1:500 - 1:3,000