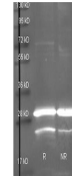

Product Datasheet

Glucose Dehydrogenase antibody (Biotin) (orb344306)

Description

Glucose Dehydrogenase antibody (Biotin)

Biorbyt Goat anti Glucose Dehydrogenase

...

Species/Host	Goat
Reactivity	Bacteria
Conjugation	Biotin
Tested Applications	ELISA, WB
Immunogen	Glucose Dehydrogenase [Bacillus species]
Preservatives	0.01% (w/v) Sodium Azide
Form/Appearance	Lyophilized
Concentration	1.0 mg/mL
Storage	Store vial at 4° C prior to restoration. For extended storage aliquot contents and freeze at -20° C or below. Avoid cycles of freezing and thawing. Centrifuge product if not completely clear after standing at room temperature. This product is stable for several weeks at 4° C as an undiluted liquid. Dilute only prior to immediate use.
Note	For research use only
Application notes	Anti-Glucose Dehydrogenase has been assayed against 1.0 ug of Glucose Dehydrogenase in a standard capture ELISA using Peroxidase Conjugated Streptavidin #S000-03 and ABTS (2,2'-azino-bis-[3-ethylbenthiazoline-6-sulfonic acid]) code # ABTS-100 as a substrate for 30 minutes at room temperature. A working dilution of 1:4,000 to 1:20,000 of the reconstitution concentration is suggested for this product.
Isotype	IgG
Clonality	Polyclonal
Purity	Anti-Glucose Dehydrogenase is an IgG fraction antibody purified from monospecific antiserum by a multi-step process which includes delipidation, salt fractionation and ion exchange chromatography followed by extensive dialysis against the buffer stated above. Assay by immunoelectrophoresis resulted in a single precipitin arc against anti-Biotin, anti-Goat Serum as well as purified and partially purified Glucose Dehydrogenase [Bacillus species]. Cross reactivity against Glucose Dehydrogenase from other sources is unknown.

Uniprot ID [P07999](https://www.uniprot.org/protein/P07999)