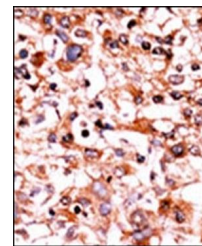
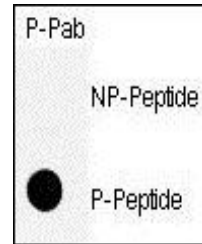


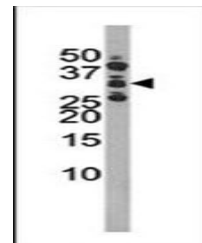
Product Datasheet

CDK1 (phospho-Ser39) antibody (orb34429)

Description	Peptide affinity purified rabbit polyclonal antibody.
Species/Host	Rabbit
Reactivity	Human
Conjugation	Unconjugated
Tested Applications	DOT, IHC-P, WB
Immunogen	Synthetic Peptide
Target	CDK1
Form/Appearance	Purified polyclonal antibody supplied in PBS with 0.09% (W/V) sodium azide. This antibody is purified through a protein A column, followed by peptide affinity purification.
Storage	Maintain refrigerated at 2-8°C for up to 2 weeks. For long term storage store at -20°C in small aliquots to prevent freeze-thaw cycles
Note	For research use only
Isotype	Rabbit IgG
Clonality	Polyclonal
MW	34095
Uniprot ID	P06493
NCBI	NP_001777.1 , NP_203698.1
Dilution Range	DOT: 1:500, WB: 1:1000, IHC-P: 1:50-100
Expiration Date	12 months from date of receipt.



Immunohistochemical staining of paraffin...



Western blot analysis of Ramos tissue ly...