

## Product Datasheet

### Luciferase antibody (orb344220)

**Description**

Luciferase antibody

**Species/Host**

Goat

**Conjugation**

Unconjugated

**Tested Applications**

ELISA, IF, IHC, WB

**Immunogen**

Luciferase [Photinus pyralis (Firefly)]

**Preservatives**

0.01% (w/v) Sodium Azide

**Form/Appearance**

Liquid (sterile filtered)

**Concentration**

1.0 mg/ml

**Storage**

Store vial at -20° C or below prior to opening. This vial contains a relatively low volume of reagent (25 µL). To minimize loss of volume dilute 1:10 by adding 225 µL of the buffer stated above directly to the vial. Recap, mix thoroughly and briefly centrifuge to collect the volume at the bottom of the vial. Use this intermediate dilution when calculating final dilutions as recommended below. Store the vial at -20°C or below after dilution. Avoid cycles of freezing and thawing.

**Note**

For research use only

**Application notes**

Anti-Luciferase Antibody has been tested in Western Blot, IHC, IF, and ELISA. Expect a band ~60kDa in appropriate cell lysates. Although not tested, this antibody would be useful in immunoprecipitation, immunocytochemistry, and most immunological methods requiring high titers and specificity.

**Isotype**

IgG

**Clonality**

Polyclonal

**Purity**

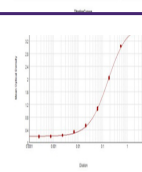
This product is an IgG fraction antibody purified from monospecific antiserum by a multi-step process which includes delipidation, salt fractionation and ion exchange chromatography followed by extensive dialysis against the buffer stated above. Assay by immunoelectrophoresis resulted in a single precipitin arc against anti-Goat Serum as well as purified and partially purified Luciferase [Photinus pyralis (Firefly)]. No reactivity is observed against Sea pansy (*Renilla reniformis*) luciferase.

**Dilution Range**

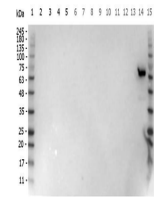
ELISA: 1:200 - 1:1000, IHC: 1:1500, IF: User Optimized, WB: 1:1000 - 1:5000

**Expiration Date**

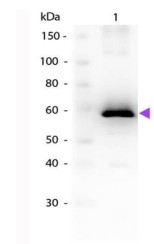
12 months from date of receipt.



ELISA Results of Goat Anti-Luciferase Antibody



Western Blot of Goat anti-Luciferase antibody



Western Blot of Goat anti-Luciferase Antibody