

---

## Product Datasheet

### Luciferase antibody (orb344219)

**Description**

Luciferase antibody

**Species/Host**

Goat

**Conjugation**

Unconjugated

**Tested Applications**

ELISA, IF, IHC, WB

**Immunogen**

Luciferase [Photinus pyralis (Firefly)]

**Preservatives**

0.01% (w/v) Sodium Azide

**Form/Appearance**

Liquid (sterile filtered)

**Concentration**

1.0 mg/ml

**Storage**

Store vial at -20° C prior to opening. Aliquot contents and freeze at -20° C or below for extended storage. Avoid cycles of freezing and thawing. Centrifuge product if not completely clear after standing at room temperature. This product is stable for several weeks at 4° C as an undiluted liquid. Dilute only prior to immediate use.

**Note**

For research use only

**Application notes**

Anti-Luciferase Antibody has been tested in Western Blot, IHC, IF, and ELISA. Expect a band ~60kDa in appropriate cell lysates. Although not tested, this antibody would be useful in immunoprecipitation, immunocytochemistry, and most immunological methods requiring high titers and specificity.

**Isotype**

IgG

**Clonality**

Polyclonal

**Purity**

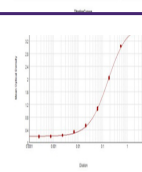
This product is an IgG fraction antibody purified from monospecific antiserum by a multi-step process which includes delipidation, salt fractionation and ion exchange chromatography followed by extensive dialysis against the buffer stated above. Assay by immunoelectrophoresis resulted in a single precipitin arc against anti-Goat Serum as well as purified and partially purified Luciferase [Photinus pyralis (Firefly)]. No reactivity is observed against Sea pansy (Renilla reniformis) luciferase.

**Dilution Range**

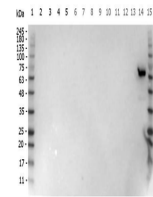
ELISA: 1:200 - 1:1000, IHC: 1:1500, IF: User Optimized, WB: 1:1000 - 1:5000

**Expiration Date**

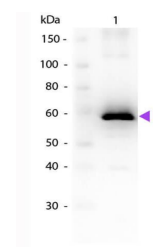
12 months from date of receipt.



ELISA Results of Goat Anti-Luciferase Antibody



Western Blot of Goat anti-Luciferase antibody



Western Blot of Goat anti-Luciferase Antibody