
Product Datasheet

Llama IgG2 isotype control Biotin Antibody (orb343843)

Description

Llama IgG2 isotype control Biotin Antibody

Conjugation

Biotin

Tested Applications

DOT, ELISA, FC, WB

Preservatives

0.01% (w/v) Sodium Azide

Form/Appearance

Lyophilized

Concentration

1.0 mg/mL

Storage

Store vial at 4° C prior to restoration. For extended storage aliquot contents and freeze at -20° C or below. Avoid cycles of freezing and thawing. Centrifuge product if not completely clear after standing at room temperature. This product is stable for several weeks at 4° C as an undiluted liquid. Dilute only prior to immediate use.

Note

For research use only

Application notes

Llama IgG2 Biotin conjugated isotype control has been tested by dot blot and can be utilized in Flow Cytometry, ELISA, and western blotting experiments where determination of sample isotype is important.

Isotype

IgG

Purity

Llama IgG2 isotype control (which consists of IgG2a, IgG2b and IgG2c isotypes) has been prepared from llama serum by multiple chromatography steps using a combination of protein A and protein G chromatography. Coomassie stained SDS-PAGE of non-reduced unconjugated llama IgG2 shows a band of ~100 kDa whereas the reduced form exhibits ~46 kDa. No bands corresponding to unconjugated llama IgG1 or IgG3 are observed. Biotin Conjugated Llama IgG2 was proven by Dot Blot.

Source

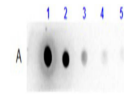
Llama

Dilution Range

ELISA: User Optimized, FC: User Optimized, WB: User Optimized

Expiration Date

12 months from date of receipt.



Dot Blot
Results of
Llama IgG2
Isotype c...