

---

## Product Datasheet

### Rat IgG1 isotype control Phycoerythrin Antibody (orb343824)

**Description**

Rat IgG1 isotype control Phycoerythrin Antibody

**Conjugation**

RPE

**Tested Applications**

DOT, ELISA, FC, FLISA, IF

**Preservatives**

0.01% (w/v) Sodium Azide

**Form/Appearance**

Lyophilized

**Concentration**

0.5 mg/mL

**Storage**

Store vial at 4° C prior to restoration. Restore with deionized water (or equivalent). This product is stable at 4° C as an undiluted liquid. Dilute only prior to immediate use. Centrifuge product if not completely clear after standing at room temperature. Do not freeze after reconstitution. Store reagent in the dark. Use subdued lighting during handling and incubation of cells prior to analysis.

**Note**

For research use only

**Application notes**

RAT IgG1 isotype control has been tested in dot blot and can be utilized as a control or standard reagent in Western Blotting, Flow Cytometry, and ELISA experiments where determination of sample isotype is important. Specific conditions should be optimized by user.

**Isotype**

IgG1

**Purity**

RAT IgG1 isotype control has been prepared from concentrated cell culture supernatant by immunoaffinity chromatography using protein G. Assay by immunoelectrophoresis resulted in a single precipitin arc against anti-phycoerythrin, anti-Rat IgG and anti-Rat serum. Isotyping assay resulted non-reactive with antisera to Rat IgG2a, IgG2b, IgG3, IgM, and IgA. Phycoerythrin Conjugated Rat IgG1 confirmed by Dot Blot.

**Source**

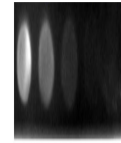
Rat

**Dilution Range**

ELISA: 1:2000 - 1:20,000, FLISA: User Optimized, FC: 1:1000-1:5000, IF: User Optimized

**Expiration Date**

12 months from date of receipt.



Dot Blot results of Rat IgG1 isotype con...