
Product Datasheet

**Mouse IgG2b isotype control Allophycocyanin
Antibody (orb343802)**

Description

Mouse IgG2b isotype control Allophycocyanin

Conjugation

APC

Tested Applications

DOT, ELISA, FC, FLISA, IF

Preservatives

0.01% (w/v) Sodium Azide

Form/Appearance

Liquid (sterile filtered)

Concentration

1.0 mg/mL

Storage

Store vial at 4° C prior to opening. Dilute only prior to immediate use. This product is stable at 4° C as an undiluted liquid. Use subdued lighting during handling and incubation of cells prior to analysis. Store reagent in the dark. DO NOT FREEZE.

Note

For research use only

Application notes

Mouse IgG2b kappa isotype control has been tested in dot blot and can be utilized as a control or standard reagent in Flow Cytometry, Western Blotting, and ELISA experiments where determination of sample isotype is important.

Isotype

IgG2b

Purity

Mouse Isotype control has been prepared from concentrated cell culture supernatant by immunoaffinity chromatography using protein A. Assay by immunoelectrophoresis resulted in a single precipitin arc against anti-Mouse IgG2b and anti-Mouse serum. Isotyping assay resulted the material is non-reactive with antisera to mouse IgG1, IgG2a, IgG3, IgM, and IgA. Allophycocerythrin Conjugated Mouse IgG2b was proven by Dot Blot.

Source

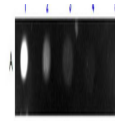
Mouse

Dilution Range

ELISA: 1:2000 - 1:20,000, FLISA: User Optimized, FC: 1:1000-1:5000, IF: User Optimized

Expiration Date

12 months from date of receipt.



Dot Blot
Results of
Mouse
IgG2b
Isotype ...