

---

## Product Datasheet

**Mouse IgG2b isotype control Phycoerythrin  
Antibody (orb343794)**

**Description**

Mouse IgG2b isotype control Phycoerythrin

**Conjugation**

RPE

**Tested Applications**

DOT, FC, FLISA, IF

**Preservatives**

0.01% (w/v) Sodium Azide

**Form/Appearance**

Lyophilized

**Concentration**

1 mg/ml

**Storage**

Store vial at 4° C prior to restoration. Restore with deionized water (or equivalent). This product is stable at 4° C as an undiluted liquid. Dilute only prior to immediate use. Centrifuge product if not completely clear after standing at room temperature. Do not freeze after reconstitution. Store reagent in the dark. Use subdued lighting during handling and incubation of cells prior to analysis.

**Note**

For research use only

**Application notes**

Mouse IgG2b isotype control has been tested in dot blot and can be utilized as a control or standard reagent in Flow cytometry, Western Blotting, and ELISA experiments where determination of sample isotype is important.

**Isotype**

IgG2b

**Purity**

This product was prepared from ascitic fluid by affinity chromatography. Assay by immunoelectrophoresis resulted in a single precipitin arc against anti-Mouse IgG2b and anti-Mouse serum. Isotyping assay resulted the material is non-reactive with antisera to mouse IgG1, IgG2a, IgG3, IgM, and IgA. Phycoerythrin Conjugated Mouse IgG2b was proven by Dot Blot.

**Source**

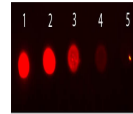
Mouse

**Dilution Range**

FLISA: User Optimized, FC: User Optimized, IF: 1:1000-1:5000

**Expiration Date**

12 months from date of receipt.



Dot Blot of  
Mouse  
IgG2b  
Isotype  
Control ...