
Product Datasheet

Mouse IgG2a isotype control Phycoerythrin Antibody (orb343793)

Description

Mouse IgG2a isotype control Phycoerythrin

Conjugation

RPE

Tested Applications

DOT, ELISA, FC, FLISA, IF

Preservatives

0.01% (w/v) Sodium Azide

Form/Appearance

Lyophilized

Concentration

1.0 mg/mL

Storage

Store vial at 4° C prior to restoration. Restore with deionized water (or equivalent). This product is stable at 4° C as an undiluted liquid. Dilute only prior to immediate use. Centrifuge product if not completely clear after standing at room temperature. Do not freeze after reconstitution. Store reagent in the dark. Use subdued lighting during handling and incubation of cells prior to analysis.

Note

For research use only

Application notes

Mouse IgG2a isotype control has been tested in dot blot and can be utilized as a control or standard reagent in Flow cytometry, Western Blotting, and ELISA experiments where determination of sample isotype is important.

Isotype

IgG2a

Purity

This product was prepared from ascitic fluid by affinity chromatography. Assay by immunoelectrophoresis resulted in a single precipitin arc against anti-Mouse IgG2a and anti-Mouse Serum. Isotyping assay resulted the material is non-reactive with antisera to mouse IgG1, IgG2b, IgG3, IgM, and IgA. Phycoerythrin Conjugated Mouse IgG2a was proven by Dot Blot.

Source

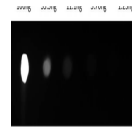
Mouse

Dilution Range

ELISA: User Optimized, FLISA: User Optimized, FC: 1:1000-1:5000, IF: 1:1000-1:5000

Expiration Date

12 months from date of receipt.



Dot Blot results of Mouse IgG2a R-Phycoe...