

## Product Datasheet

### Mouse IgG3 isotype control Fluorescein Antibody (orb343783)

**Description**

Mouse IgG3 isotype control Fluorescein Antibody

**Conjugation**

FITC

**Tested**

DOT, ELISA, FC, FLISA, IF, WB

**Applications**
**Preservatives**

0.01% (w/v) Sodium Azide

**Form/Appearance**

Lyophilized

**Concentration**

1.0 mg/mL

**Storage**

Store vial at 4° C prior to restoration. For extended storage aliquot contents and freeze at -20° C or below. Avoid cycles of freezing and thawing. Centrifuge product if not completely clear after standing at room temperature. This product is stable for several weeks at 4° C as an undiluted liquid. Dilute only prior to immediate use.

**Note**

For research use only

**Application notes**

Mouse IgG3 isotype has been tested in dot blot and is designed for immunofluorescence microscopy, flow cytometry, fluorescence based plate assays (FLISA), fluorescent western blotting, multiplex analysis, including multicolor imaging, utilizing various commercial platforms.

**Isotype**

IgG3

**Purity**

This product has been prepared from serum-free tissue culture supernate by protein A chromatography. Typically less than 1% cross reactivity against other mouse heavy or light chain specific antibodies was detected by ELISA.

**Source**

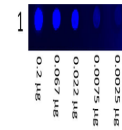
Mouse

**Dilution Range**

ELISA: User Optimized, FLISA: User Optimized, FC: 1:1000-1:5000, IF: User Optimized, WB: User Optimized

**Expiration Date**

12 months from date of receipt.



Dot Blot showing the detection of fluorescence...