
Product Datasheet

Mouse IgG2a isotype control Fluorescein Antibody (orb343781)

Description

Mouse IgG2a isotype control Fluorescein Antibody

Conjugation

FITC

Tested

DOT, ELISA, FC, FLISA, IF, WB

Applications
Preservatives

0.01% (w/v) Sodium Azide

Form/Appearance

Lyophilized

Concentration

1.0 mg/mL

Storage

Store vial at 4° C prior to restoration. For extended storage aliquot contents and freeze at -20° C or below. Avoid cycles of freezing and thawing. Centrifuge product if not completely clear after standing at room temperature. This product is stable for several weeks at 4° C as an undiluted liquid. Dilute only prior to immediate use.

Note

For research use only

Application notes

Mouse IgG2a isotype control has been tested in dot blot and can be utilized as a control or standard reagent in Flow cytometry, Western Blotting, Immunofluorescence, and ELISA experiments where determination of sample isotype is important.

Isotype

IgG2a

Purity

This product has been prepared from normal mouse serum by immunoaffinity chromatography using antibodies coupled to agarose beads. Extensive cross-adsorption was performed to remove any unwanted subclasses. Assay by immunoelectrophoresis resulted in a single precipitin arc against anti-Mouse IgG2a and anti-Mouse Serum. Isotyping assay resulted the material is non-reactive with antisera to mouse IgG1, IgG2b, IgG3, IgM, and IgA. Fluorescein Conjugated Mouse IgG2a was proven by Dot Blot.

Source

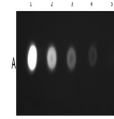
Mouse

Dilution Range

ELISA: User Optimized, FLISA: User Optimized, FC: 1:1000-1:5000, IF: User Optimized, WB: User Optimized

Expiration Date

12 months from date of receipt.


 Dot Blot of
 Mouse
 IgG2a
 Isotype
 Control ...