

---

## Product Datasheet

### Mouse IgG1 isotype Control Antibody (orb343776)

**Description**

Mouse IgG1 isotype Control Antibody

**Conjugation**

Unconjugated

**Tested Applications**

ELISA, FC, FLISA, IF, SDS-PAGE, WB

**Preservatives**

0.01% (w/v) Sodium Azide

**Form/Appearance**

Liquid (sterile filtered)

**Concentration**

1.0 mg/mL

**Storage**

Store vial at 4° C prior to opening. For extended storage aliquot contents and freeze at -20° C or below. Avoid cycles of freezing and thawing. Centrifuge product if not completely clear after standing at room temperature. This product is stable for several weeks at 4° C as an undiluted liquid. Dilute only prior to immediate use.

**Note**

For research use only

**Application notes**

Mouse IgG1 isotype control has been tested by ELISA and SDS-Page and can be utilized as a control or standard reagent in Flow cytometry, Western Blotting, and ELISA experiments where determination of sample isotype is important.

**Isotype**

IgG1

**Purity**

Mouse IgG1 Isotype control has been prepared from concentrated cell culture supernatant by immunoaffinity chromatography using protein A. Assay by immunoelectrophoresis resulted in a single precipitin arc against anti-Mouse IgG1 and anti-Mouse Serum. Isotyping assay resulted the material is non-reactive with antisera to mouse IgG2a, IgG2b, IgG3, IgM, and IgA. SDS-PAGE shows a band at 60 kDa corresponding to alpha heavy chain.

**Source**

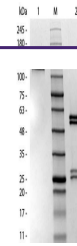
Mouse

**Dilution Range**

ELISA: User Optimized, FLISA: User Optimized, FC: 1:1000-1:5000, IF: User Optimized, WB: User Optimized

**Expiration Date**

12 months from date of receipt.



SDS-PAGE of Mouse IgG1 Isotype Control. ...