
Product Datasheet

Mouse IgM Kappa isotype Control Antibody (orb343770)

Description

Mouse IgM Kappa isotype Control Antibody


Conjugation

Unconjugated

Tested Applications

ELISA, FC, FLISA, IF, SDS-PAGE, WB

Preservatives

0.1% (w/v) Sodium Azide. 0.1 M Tris Chloride, 0.5 M Sodium Chloride, pH 8.0

Form/Appearance

Liquid (sterile filtered)

Concentration

1.0mg/mL

Storage

Store vial at 4° C prior to opening. Mouse IgM Kappa (κ) isotype control is stable 4° C as an undiluted liquid. Dilute only prior to immediate use. For extended storage mix with an equal volume of glycerol, aliquot contents and freeze at -20° C or below. Avoid cycles of freezing and thawing.

Note

For research use only

Application notes

Mouse IgM kappa isotype control has been tested in ELISA and can be utilized as a control or standard reagent in Flow cytometry, Western Blotting, and ELISA experiments where determination of sample isotype is important.

Isotype

IgM

Purity

Mouse IgM Kappa isotype control was prepared from concentrated cell culture supernatant by a multi-step process which includes selective precipitation and tandem molecular sieve chromatography followed by extensive dialysis against the buffer stated above. Assay by immunoelectrophoresis resulted in a single precipitin arc against anti-Mouse IgM mu and anti-Mouse serum. Isotyping assay resulted non-reactive with antisera to mouse IgG1, IgG2a, IgG2b, Ig3, IgA. Light chain composition has been confirmed by SDS-PAGE.

Source

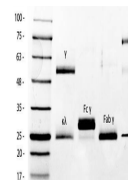
Mouse

Dilution Range

ELISA: User Optimized, FLISA: User Optimized, FC: 1:1000-1:5000, IF: User Optimized, WB: User Optimized

Expiration Date

12 months from date of receipt.



SDS-PAGE of Mouse IgG Whole Molecule Rho...