
Product Datasheet

Mouse IgG3 Lambda isotype Control Antibody (orb343768)

Description

Mouse IgG3 Lambda isotype Control Antibody

Conjugation

Unconjugated

Tested Applications

ELISA, FC, FLISA, IF, SDS-PAGE, WB

Preservatives

0.01% (w/v) Sodium Azide

Form/Appearance

Liquid (sterile filtered)

Concentration

1.0 mg/mL

Storage

Store vial at 4° C prior to opening. This product is stable 4° C as an undiluted liquid. Dilute only prior to immediate use. For extended storage mix with an equal volume of glycerol, aliquot contents and freeze at -20° C or below. Avoid cycles of freezing and thawing.

Note

For research use only

Application notes

Mouse IgG3 lambda isotype control has been tested in SDS-Page and can be utilized as a control or standard reagent in Flow cytometry, Western Blotting, and ELISA experiments where determination of sample isotype is important.

Isotype

IgG3

Purity

Mouse Isotype control has been prepared from concentrated cell culture supernatant by immunoaffinity chromatography using protein A. Assay by immunoelectrophoresis resulted in a single precipitin arc against anti-Mouse IgG3 and anti-Mouse serum. Isotyping assay resulted non-reactive with antisera to mouse IgG1, IgG2a, IgG2b, IgA, IgM. Light chain composition has been confirmed by SDS-PAGE.

Source

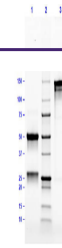
Mouse

Dilution Range

ELISA: User Optimized, FLISA: User Optimized, FC: 1:1000-1:5000, IF: User Optimized, WB: User Optimized

Expiration Date

12 months from date of receipt.



SDS PAGE
Results of
Mouse IgG3
Lambda Is...