

---

## Product Datasheet

### Mouse IgG2b Lambda Isotype control Antibody (orb343766)

**Description**

Mouse IgG2b Lambda Isotype control Antibody

**Conjugation**

Unconjugated

**Tested Applications**

ELISA, FC, FLISA, IF, SDS-PAGE, WB

**Preservatives**

0.01% (w/v) Sodium Azide

**Form/Appearance**

Liquid (sterile filtered)

**Concentration**

1.01 mg/mL

**Storage**

Store vial at 4° C prior to opening. This product is stable 4° C as an undiluted liquid. Dilute only prior to immediate use. For extended storage mix with an equal volume of glycerol, aliquot contents and freeze at -20° C or below. Avoid cycles of freezing and thawing.

**Note**

For research use only

**Application notes**

Mouse IgG2b lambda control has been tested in SDS-Page and can be utilized as a control or standard reagent in Western Blotting, Flow Cytometry, and ELISA experiments where determination of sample isotype is important. Specific conditions should be optimized by user.

**Isotype**

IgG2b

**Purity**

Mouse Isotype control has been prepared from concentrated cell culture supernatant by immunoaffinity chromatography using protein A. Assay by immunoelectrophoresis resulted in a single precipitin arc against anti-Mouse IgG2b and anti-Mouse serum. Isotyping assay resulted non-reactive with antisera to mouse IgG1, IgG2a, IgG3, IgA, IgM. Light chain composition has been confirmed by SDS-PAGE.

**Source**

Mouse

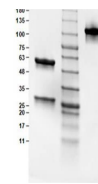
**Dilution Range**

ELISA: User Optimized, FLISA: User Optimized, FC: 1:1000-1:5000, IF: User Optimized, WB: User Optimized

**Expiration Date**

12 months from date of receipt.

1 2 3



SDS-PAGE  
Results of  
Mouse  
IgG2b  
Lambda I...