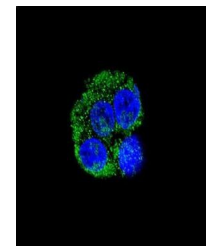
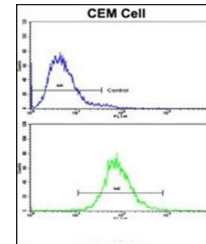


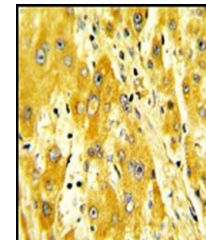
Product Datasheet

CD36 antibody (orb34271)

Description	Rabbit polyclonal antibody to CD36
Species/Host	Rabbit
Reactivity	Human, Mouse
Conjugation	Unconjugated
Tested Applications	FC, IF, IHC-P, WB
Immunogen	Synthetic Peptide
Target	CD36
Form/Appearance	Purified polyclonal antibody supplied in PBS with 0.09% (W/V) sodium azide. This antibody is purified through a protein A column, followed by peptide affinity purification.
Storage	Maintain refrigerated at 2-8°C for up to 2 weeks. For long term storage store at -20°C in small aliquots to prevent freeze-thaw cycles
Note	For research use only
Isotype	Rabbit IgG
Clonality	Polyclonal
MW	53053
Uniprot ID	P16671
NCBI	NP_001120916.1 , NP_000063.2 , NP_001001548.1 , NP_001120915.1 , NP_001001547.1
Dilution Range	WB: 1:1000, IHC-P: 1:10-50, FACS: 1:10-50, IF/ICC: 1:10-50
Expiration Date	12 months from date of receipt.



Immunofluorescence analysis of HepG2 cel...



Immunohistochemical staining of paraffin...