

Product Datasheet

Cyclin Dependent Kinase Antibody Sampler Kit (orb342332)

Description Cyclin Dependent Kinase Antibody Sampler Kit

Reactivity Human, Mouse, Rat

Conjugation Unconjugated

Tested Applications ELISA, IHC, IP, WB

Form/Appearance Liquid (sterile filtered)

Storage Store antibodies at -20° C prior to opening. Aliquot contents and freeze at -20° C or below for extended storage. Avoid cycles of freezing and thawing. Centrifuge product if not completely clear after standing at room temperature. This product is stable for several weeks at 4° C as an undiluted liquid. Dilute only prior to immediate use.

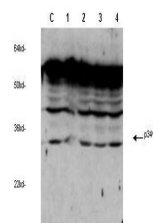
Note For research use only

Application notes Each kit contains one unit of the following products: (100 µL) Anti-cdc2 (p34) (RABBIT) Antibody (100 µL) Anti-cdk2 (RABBIT) Antibody (100 µL) Anti-cdk4 (RABBIT) Antibody (100 µL) Anti-cdk5 (RABBIT) Antibody (100 µL) Anti-cdk9 (PITALRE) (RABBIT) Antibody (100 µg) Anti-RABBIT IgG (H&L) (GOAT) Antibody Peroxidase Conjugated

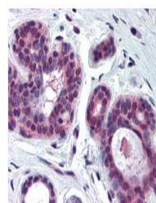
Purity Specific Polyclonal Antibodies

Dilution Range ELISA: 1:2,000 - 1:10,000, IHC: User Optimized, IP: 1:100, WB: 1:500 - 1:5,000

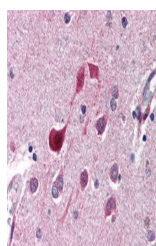
Expiration Date Please enquire.



Biorbyt's anti-cdc2 Cyclin Dependent Kin...



Biorbyt's Anti-CDK2 antibody (orb750450)...



Biorbyt's anti-CDK5 antibody (orb750453)...