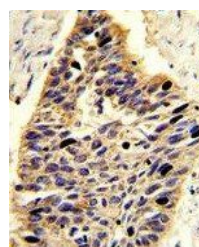
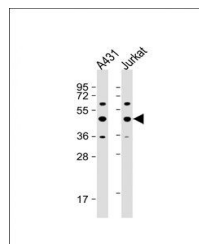


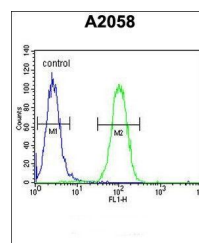
Product Datasheet

PA2G4 antibody (orb34215)

Description	Purified rabbit polyclonal antibody.
Species/Host	Rabbit
Reactivity	Human
Conjugation	Unconjugated
Tested Applications	FC, IF, IHC-P, WB
Immunogen	Synthetic Peptide
Target	PA2G4
Form/Appearance	Purified polyclonal antibody supplied in PBS with 0.09% (W/V) sodium azide. This antibody is prepared by Saturated Ammonium Sulfate (SAS) precipitation followed by dialysis against PBS.
Storage	Maintain refrigerated at 2-8°C for up to 2 weeks. For long term storage store at -20°C in small aliquots to prevent freeze-thaw cycles
Note	For research use only
Isotype	Rabbit IgG
Clonality	Polyclonal
MW	43787
Uniprot ID	Q9UQ80
NCBI	NP_006182.2
Dilution Range	WB 1:50-1:100
Expiration Date	12 months from date of receipt.



Immunohistochemical staining of human lu...



Flow cytometric analysis of A2058 cells ...