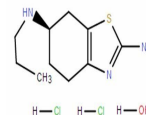


Product Datasheet

Pramipexole 2HCL monohydrate (orb342003)

Description	Pramipexole dihydrochloride hydrate is a selective dopamine D2-type receptor agonist, with Kis of 2....
Note	For research use only
Formula	$C_{10}H_{21}Cl_2N_3OS$
MW	302.2642391
CAS Number	[191217-81-9]
SMILES	<chem>O.Cl.Cl.CCCNC1CCC2N=C(SC=2C1)N</chem>
Expiration Date	12 months from date of receipt.



Chemical structure of Pramipexole 2HCL m...