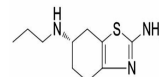


Product Datasheet

Pramipexole Base (orb341930)

Description	Pramipexole is a dopamine agonist of the non-ergoline class indicated for treating Parkinson's disea...
Note	For research use only
Formula	$C_{10}H_{17}N_3S$
MW	211.33
CAS Number	[104632-26-0]
SMILES	CCCN=C1CCC2N=C(SC=2C1)N
Expiration Date	12 months from date of receipt.



Chemical structure of Pramipexole Base