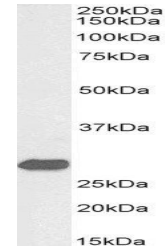


Product Datasheet

ETFB antibody (Biotin) (orb341507)

Description	Goat polyclonal antibody against ETFB conjugated to Biotin
Species/Host	Goat
Reactivity	Bovine, Canine, Human, Mouse, Rat
Conjugation	Unconjugated
Tested Applications	ELISA, IHC, WB
Target	ETFB (aa 231-243), Biotinylated
Preservatives	Supplied at 0.5 mg/ml in Tris saline, 0.02% sodium azide, pH 7.3 with 0.5% bovine serum albumin. Aliquot and store at -20°C. Minimize freezing and thawing.
Storage	Aliquot and store at -20°C. Minimize freezing and thawing.
Note	For research use only
Application notes	WB: Approx 27kDa band observed in Mouse Liver lysates (calculated MW of 27.6kDa according to Mouse NP_080971.2). See non-biotinylated parental product's datasheet for further QC data. Recommended concentration: 0.03-0.1µg/ml.
Protein Sequence	PQRTAGVKVETTE.
Clonality	Polyclonal
MW	27.8; 37.4
Entrez	2109
Dilution Range	ELISA: 1:8000, WB: 0.03-0.1 µg/ml
Expiration Date	12 months from date of receipt.



Western blot analysis of staining of Mou...