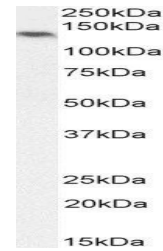


## Product Datasheet

### NLRP5 antibody (orb341503)

|                            |   |
|----------------------------|---|
| <b>Description</b>         | Goat polyclonal antibody to NLRP5   |
| <b>Species/Host</b>        | Goat  |
| <b>Reactivity</b>          | Human   |
| <b>Conjugation</b>         | Unconjugated  |
| <b>Tested Applications</b> | ELISA, WB   |
| <b>Target</b>              | NLRP5 (C-terminus)  |
| <b>Preservatives</b>       | Supplied at 0.5 mg/ml in Tris saline, 0.02% sodium azide, pH 7.3 with 0.5% bovine serum albumin. Aliquot and store at -20°C. Minimize freezing and thawing. |
| <b>Storage</b>             | Aliquot and store at -20°C. Minimize freezing and thawing.  |
| <b>Note</b>                | For research use only   |
| <b>Application notes</b>   | WB: Approx 130kDa band observed in Human Ovary lysates (calculated MW of 134kDa according to NP_703148.4). Recommended concentration: 1-3µg/ml.             |
| <b>Protein Sequence</b>    | DGSWHSFDEDDR  |
| <b>Clonality</b>           | Polyclonal  |
| <b>MW</b>                  | 134   |
| <b>Entrez</b>              | <b>126206</b>   |
| <b>Dilution Range</b>      | ELISA: 1:128000, WB: 1-3 µg/ml  |
| <b>Expiration Date</b>     | 12 months from date of receipt.   |



Western blot analysis of staining of Hum...