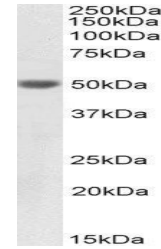


Product Datasheet

KRT20 antibody (Biotin) (orb341497)

Description	Goat polyclonal antibody against KRT20 conjugated to Biotin
Species/Host	Goat
Reactivity	Human
Conjugation	Unconjugated
Tested Applications	ELISA, WB
Target	Cytokeratin 20, Biotinylated
Preservatives	Supplied at 0.5 mg/ml in Tris saline, 0.02% sodium azide, pH 7.3 with 0.5% bovine serum albumin. Aliquot and store at -20°C. Minimize freezing and thawing.
Storage	Aliquot and store at -20°C. Minimize freezing and thawing.
Note	For research use only
Application notes	WB: Approx 49kDa band observed in Human Colon lysates (calculated MW of 48.5kDa according to NP_061883.1). See non-biotinylated parental product's datasheet for further QC data. Recommended concentration: 1-3µg/ml.
Protein Sequence	ETNAPRAGRDIS.
Clonality	Polyclonal
MW	48.5
Entrez	54474
Dilution Range	ELISA: 1:128000, WB: 1-3 µg/ml
Expiration Date	12 months from date of receipt.



Western blot analysis of staining of Hum...