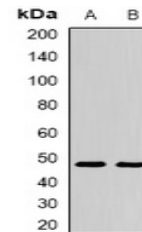


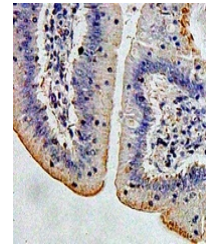
Product Datasheet

AMY2A antibody (orb341424)

Description	Rabbit polyclonal antibody to AMY2A
Species/Host	Rabbit
Reactivity	Human
Conjugation	Unconjugated
Tested Applications	IH, WB
Immunogen	Recombinant full length protein of human AMY2A
Target	AMY2A
Preservatives	Liquid in 0.42% Potassium phosphate, 0.87% Sodium chloride, pH 7.3, 30% glycerol, and 0.01% sodium azide.
Form/Appearance	Liquid in 0.42% Potassium phosphate, 0.87% Sodium chloride, pH 7.3, 30% glycerol, and 0.01% sodium azide.
Storage	Maintain refrigerated at 2-8°C for up to 2 weeks. For long term storage store at -20°C in small aliquots to prevent freeze-thaw cycles.
Note	For research use only
Clonality	Polyclonal
Source	Rabbit
Uniprot ID	P04746
Entrez	279
Dilution Range	WB: 1:500-1:2000, IHC-P: 1:50-1:200
Expiration Date	12 months from date of receipt.



Western blot analysis of AMY2A expressio...



Immunohistochemical analysis of AMY2A st...