
Product Datasheet

FOXP3 antibody (orb34127)

Description

FOXP3 antibody

Species/Host

Rabbit

Reactivity

Human, Mouse, Rat

Conjugation

Unconjugated

Tested

ELISA, ICC, IF, IHC-P, WB

Applications
Immunogen

KLH conjugated synthetic peptide derived from human FOXP3. Please contact us for the exact immunogen sequence. The peptide is available as orb374794.

Target

FOXP3

Form/Appearance

10 mM PBS, 0.02% sodium azide

Concentration

- 100 µg (in 200 µl): 0.5 mg/ml- 200 µg (in 400 µl): 0.5 mg/ml

Storage

Aliquot and store at -20°C or -80°C. Avoid repeated freeze/thaw cycles.

Note

For research use only

Isotype

IgG

Clonality

Polyclonal

Purity

Polyclonal antibodies are purified by peptide affinity chromatography

MW

50 kDa

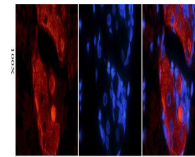
Uniprot ID
[Q99JB6](#), [Q9BZS1](#)
NCBI
[21](#), [31](#), [054728](#), [014009](#)
Entrez
[50943](#)
Dilution Range

WB: 1:200, IHC-P: 1:500, IF/ICC: 1:500

Expiration Date

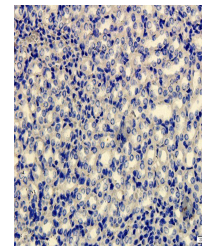
12 months from date of receipt.

(G) DAPI Merge

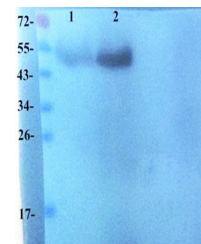


Immunofluorescence analysis of rat skin

...



IHC-P image of mouse kidney tissue using...



WB analysis of human breast cancer 25 (L...