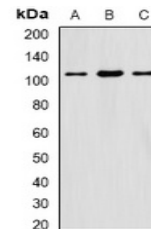


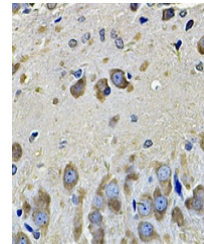
Product Datasheet

EIF3C antibody (orb341219)

Description	Rabbit polyclonal antibody to EIF3C
Species/Host	Rabbit
Reactivity	Human, Mouse, Rat
Conjugation	Unconjugated
Tested Applications	IF, IH, WB
Immunogen	Recombinant full length protein of human eIF3C
Target	EIF3C
Preservatives	Liquid in 0.42% Potassium phosphate, 0.87% Sodium chloride, pH 7.3, 30% glycerol, and 0.01% sodium azide.
Form/Appearance	Liquid in 0.42% Potassium phosphate, 0.87% Sodium chloride, pH 7.3, 30% glycerol, and 0.01% sodium azide.
Storage	Maintain refrigerated at 2-8°C for up to 2 weeks. For long term storage store at -20°C in small aliquots to prevent freeze-thaw cycles.
Note	For research use only
Clonality	Polyclonal
Source	Rabbit
Uniprot ID	B5DFC8 , Q8R1B4 , Q99613
Entrez	8663 , 293484 , 56347
Dilution Range	WB: 1:500-1:2000, IF/ICC: 1:50-1:100
Expiration Date	12 months from date of receipt.



Western blot analysis of EIF3C expression...



Immunohistochemical analysis of EIF3C staining...



Immunofluorescent analysis of EIF3C staining...