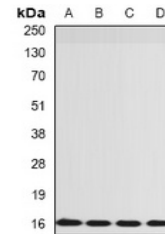


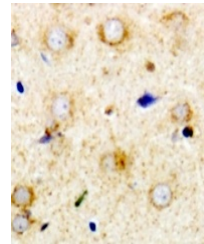
Product Datasheet

RPS14 antibody (orb341160)

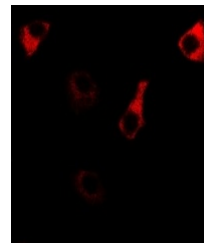
| | |
|----------------------------|---|
| Description | Rabbit polyclonal antibody to RPS14 |
| Species/Host | Rabbit |
| Reactivity | Human, Mouse, Rat |
| Conjugation | Unconjugated |
| Tested Applications | IF, IH, WB |
| Immunogen | Recombinant full length protein of human RPS14 |
| Target | RPS14 |
| Preservatives | Liquid in 0.42% Potassium phosphate, 0.87% Sodium chloride, pH 7.3, 30% glycerol, and 0.01% sodium azide. |
| Form/Appearance | Liquid in 0.42% Potassium phosphate, 0.87% Sodium chloride, pH 7.3, 30% glycerol, and 0.01% sodium azide. |
| Storage | Shipped at 4°C. Upon delivery aliquot and store at -20°C for one year. Avoid freeze/thaw cycles. |
| Note | For research use only |
| Clonality | Polyclonal |
| Source | Rabbit |
| Uniprot ID | P62263 , P13471 , P62264 |
| Entrez | 29284 , 6208 , 20044 |
| Dilution Range | WB: 1:500-1:2000, IHC-P: 1:50-1:200, IF/ICC: 1:50-1:200 |
| Expiration Date | 12 months from date of receipt. |



Western blot analysis of RPS14 expressio...



Immunohistochemical analysis of RPS14 st...



Immunofluorescent analysis of RPS14 stai...