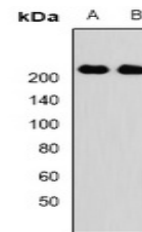


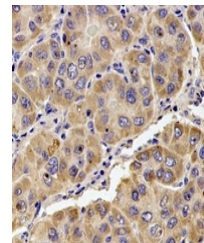
Product Datasheet

KIF1B antibody (orb341134)

Description	Rabbit polyclonal antibody to KIF1B
Species/Host	Rabbit
Reactivity	Human, Mouse
Conjugation	Unconjugated
Tested Applications	IH, WB
Immunogen	Recombinant full length protein of human KIF1B
Target	KIF1B
Preservatives	Liquid in 0.42% Potassium phosphate, 0.87% Sodium chloride, pH 7.3, 30% glycerol, and 0.01% sodium azide.
Form/Appearance	Liquid in 0.42% Potassium phosphate, 0.87% Sodium chloride, pH 7.3, 30% glycerol, and 0.01% sodium azide.
Storage	Maintain refrigerated at 2-8°C for up to 2 weeks. For long term storage store at -20°C in small aliquots to prevent freeze-thaw cycles.
Note	For research use only
Clonality	Polyclonal
Source	Rabbit
Uniprot ID	Q60575 , O60333
Entrez	23095 , 16561
Dilution Range	WB: 1:500-1:2000, IHC-P: 1:50-1:200
Expiration Date	12 months from date of receipt.



Western blot analysis of KIF1B expressio...



Immunohistochemical analysis of KIF1B st...