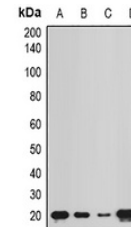


Product Datasheet

NCS1 antibody (orb341090)

Description	Rabbit polyclonal antibody to NCS1
Species/Host	Rabbit
Reactivity	Human, Mouse, Rat
Conjugation	Unconjugated
Tested Applications	WB
Immunogen	Recombinant full length protein of human NCS1
Target	NCS1
Preservatives	Liquid in 0.42% Potassium phosphate, 0.87% Sodium chloride, pH 7.3, 30% glycerol, and 0.01% sodium azide.
Form/Appearance	Liquid in 0.42% Potassium phosphate, 0.87% Sodium chloride, pH 7.3, 30% glycerol, and 0.01% sodium azide.
Storage	Maintain refrigerated at 2-8°C for up to 2 weeks. For long term storage store at -20°C in small aliquots to prevent freeze-thaw cycles.
Note	For research use only
Clonality	Polyclonal
Source	Rabbit
Uniprot ID	P62166 , Q8BNY6 , P62168
Entrez	23413 , 65153 , 14299
Dilution Range	WB: 1:500-1:2000, IF/ICC: 1:10-1:100
Expiration Date	12 months from date of receipt.



Western blot analysis of NCS1 expression...