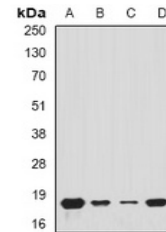


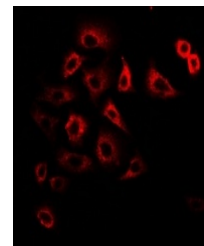
## Product Datasheet

### TIMM17A antibody (orb341087)

<b>Description</b>	Rabbit polyclonal antibody to TIMM17A
<b>Species/Host</b>	Rabbit
<b>Reactivity</b>	Human, Mouse
<b>Conjugation</b>	Unconjugated
<b>Tested Applications</b>	IF, WB
<b>Immunogen</b>	Recombinant full length protein of human Tim17
<b>Target</b>	TIMM17A
<b>Preservatives</b>	Liquid in 0.42% Potassium phosphate, 0.87% Sodium chloride, pH 7.3, 30% glycerol, and 0.01% sodium azide.
<b>Form/Appearance</b>	Liquid in 0.42% Potassium phosphate, 0.87% Sodium chloride, pH 7.3, 30% glycerol, and 0.01% sodium azide.
<b>Storage</b>	Shipped at 4°C. Upon delivery aliquot and store at -20°C for one year. Avoid freeze/thaw cycles.
<b>Note</b>	For research use only
<b>Clonality</b>	Polyclonal
<b>Source</b>	Rabbit
<b>Uniprot ID</b>	<a href="#">Q9Z0V8</a> , <a href="#">Q99595</a>
<b>Entrez</b>	<a href="#">21854</a> , <a href="#">10440</a>
<b>Dilution Range</b>	WB: 1:500-1:2000, IHC-P: 1:50-1:200, IF/ICC: 1:10-1:100
<b>Expiration Date</b>	12 months from date of receipt.



Western blot analysis of Tim17 expression...



Immunofluorescent analysis of Tim17 staining...