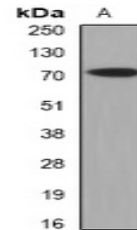


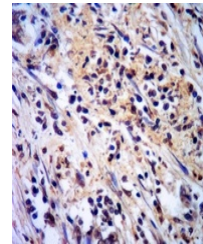
Product Datasheet

CRAT antibody (orb341052)

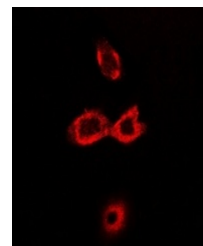
Description	Rabbit polyclonal antibody to CRAT
Species/Host	Rabbit
Reactivity	Human, Mouse
Conjugation	Unconjugated
Tested Applications	IH, WB
Immunogen	Recombinant full length protein of human CAT1
Target	CRAT
Preservatives	Liquid in 0.42% Potassium phosphate, 0.87% Sodium chloride, pH 7.3, 30% glycerol, and 0.01% sodium azide.
Form/Appearance	Liquid in 0.42% Potassium phosphate, 0.87% Sodium chloride, pH 7.3, 30% glycerol, and 0.01% sodium azide.
Storage	Maintain refrigerated at 2-8°C for up to 2 weeks. For long term storage store at -20°C in small aliquots to prevent freeze-thaw cycles.
Note	For research use only
Clonality	Polyclonal
Source	Rabbit
Uniprot ID	P43155 , P47934
Entrez	1384 , 12908
Dilution Range	WB: 1:500-1:2000, IF/ICC: 1:50-1:100
Expiration Date	12 months from date of receipt.



Western blot analysis of CAT1 expression...



Immunohistochemical analysis of CAT1 stain...



Immunofluorescent analysis of CAT1 stain...