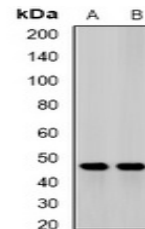


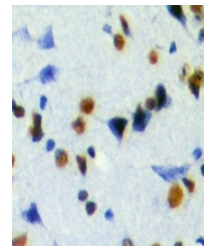
Product Datasheet

JMJD6 antibody (orb340986)

Description	Rabbit polyclonal antibody to JMJD6
Species/Host	Rabbit
Reactivity	Human, Mouse, Rat
Conjugation	Unconjugated
Tested Applications	ChIP, IF, IH, IP, WB
Immunogen	Recombinant full length protein of human JMJD6
Target	JMJD6
Preservatives	Liquid in 0.42% Potassium phosphate, 0.87% Sodium chloride, pH 7.3, 30% glycerol, and 0.01% sodium azide.
Form/Appearance	Liquid in 0.42% Potassium phosphate, 0.87% Sodium chloride, pH 7.3, 30% glycerol, and 0.01% sodium azide.
Storage	Maintain refrigerated at 2-8°C for up to 2 weeks. For long term storage store at -20°C in small aliquots to prevent freeze-thaw cycles.
Note	For research use only
Clonality	Polyclonal
Source	Rabbit
Uniprot ID	Q6AYK2 , Q9ERI5 , Q6NYC1
Entrez	107817 , 360665 , 23210
Dilution Range	WB: 1:500-1:2000, IHC-P: 1:50-1:200, IP: 1:50-1:200, ChIP: 1:20-1:100
Expiration Date	12 months from date of receipt.



Western blot analysis of JMJD6 expressio...



Immunohistochemical analysis of JMJD6 st...