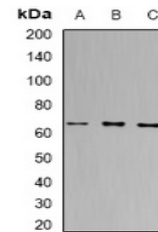


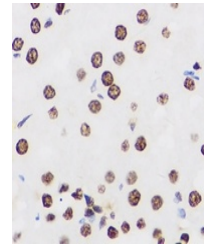
Product Datasheet

PRDM14 antibody (orb340932)

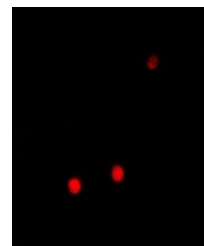
| | |
|----------------------------|---|
| Description | Rabbit polyclonal antibody to PRDM14 |
| Species/Host | Rabbit |
| Reactivity | Human, Mouse, Rat |
| Conjugation | Unconjugated |
| Tested Applications | ChIP, IF, IH, IP, WB |
| Immunogen | Recombinant full length protein of human PRDM14 |
| Target | PRDM14 |
| Preservatives | Liquid in 0.42% Potassium phosphate, 0.87% Sodium chloride, pH 7.3, 30% glycerol, and 0.01% sodium azide. |
| Form/Appearance | Liquid in 0.42% Potassium phosphate, 0.87% Sodium chloride, pH 7.3, 30% glycerol, and 0.01% sodium azide. |
| Storage | Maintain refrigerated at 2-8°C for up to 2 weeks. For long term storage store at -20°C in small aliquots to prevent freeze-thaw cycles. |
| Note | For research use only |
| Clonality | Polyclonal |
| Source | Rabbit |
| Uniprot ID | Q9GZV8 , E9Q3T6 |
| Entrez | 63978 , 383491 |
| Dilution Range | WB: 1:500-1:2000, IHC-P: 1:50-1:200, IF/ICC: 1:50-1:200, IP: 1:20-1:100, ChIP: 1:20-1:100 |
| Expiration Date | 12 months from date of receipt. |



Western blot analysis of PRDM14 expressi...



Immunohistochemical analysis of PRDM14 S...



Immunofluorescent analysis of PRDM14 sta...