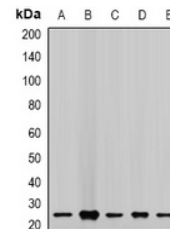


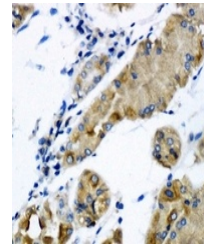
Product Datasheet

CHMP2B antibody (orb340906)

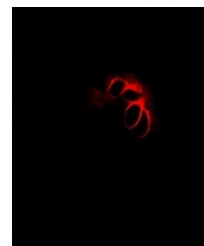
Description	Rabbit polyclonal antibody to CHMP2B
Species/Host	Rabbit
Reactivity	Human, Mouse, Rat
Conjugation	Unconjugated
Tested Applications	IF, IH, WB
Immunogen	Recombinant full length protein of human CHMP2B
Target	CHMP2B
Preservatives	Liquid in 0.42% Potassium phosphate, 0.87% Sodium chloride, pH 7.3, 30% glycerol, and 0.01% sodium azide.
Form/Appearance	Liquid in 0.42% Potassium phosphate, 0.87% Sodium chloride, pH 7.3, 30% glycerol, and 0.01% sodium azide.
Storage	Maintain refrigerated at 2-8°C for up to 2 weeks. For long term storage store at -20°C in small aliquots to prevent freeze-thaw cycles.
Note	For research use only
Clonality	Polyclonal
Source	Rabbit
Uniprot ID	Q9UQN3 , Q8BJF9
Entrez	68942 , 25978
Dilution Range	WB: 1:500-1:2000, IHC-P: 1:50-1:200, IF/ICC: 1:50-1:200
Expiration Date	12 months from date of receipt.



Western blot analysis of CHMP2B expressi...



Immunohistochemical analysis of CHMP2B S...



Immunofluorescent analysis of CHMP2B sta...