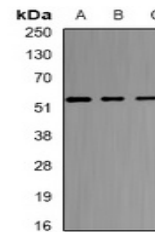


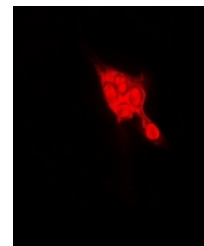
Product Datasheet

SELENBP1 antibody (orb340745)

Description	Rabbit polyclonal antibody to SELENBP1
Species/Host	Rabbit
Reactivity	Human, Mouse
Conjugation	Unconjugated
Tested Applications	IF, WB
Immunogen	Recombinant full length protein of human SELENBP1
Target	SELENBP1
Preservatives	Liquid in 0.42% Potassium phosphate, 0.87% Sodium chloride, pH 7.3, 30% glycerol, and 0.01% sodium azide.
Form/Appearance	Liquid in 0.42% Potassium phosphate, 0.87% Sodium chloride, pH 7.3, 30% glycerol, and 0.01% sodium azide.
Storage	Shipped at 4°C. Upon delivery aliquot and store at -20°C for one year. Avoid freeze/thaw cycles.
Note	For research use only
Clonality	Polyclonal
Source	Rabbit
Uniprot ID	Q13228 , P17563
Entrez	8991 , 20341
Dilution Range	WB: 1:500-1:2000, IF/ICC: 1:50-1:200
Expiration Date	12 months from date of receipt.



Western blot analysis of SELENBP1 expres...



Immunofluorescent analysis of SELENBP1 s...