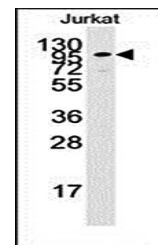
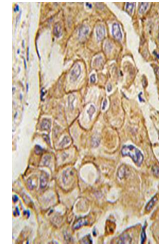


Product Datasheet

ADCY2 antibody (orb34050)

Description	Purified rabbit polyclonal antibody.
Species/Host	Rabbit
Reactivity	Human
Conjugation	Unconjugated
Tested Applications	IHC-P, WB
Immunogen	This ADCY2 antibody is generated from rabbits immunized with a KLH conjugated synthetic peptide between 940-969 amino acids from the C-terminal region of human ADCY2.
Target	ADCY2
Form/Appearance	supplied in PBS with 0.09% (W/V) sodium azide.
Storage	Maintain refrigerated at 2-8°C for up to 2 weeks. For long term storage store at -20°C in small aliquots to prevent freeze-thaw cycles
Note	For research use only
Isotype	Rabbit IgG
Clonality	Polyclonal
MW	123603 Da
Uniprot ID	Q08462
NCBI	NP_065433.2
Dilution Range	WB: 1:1000, IHC-P: 1:10-50
Expiration Date	12 months from date of receipt.



Western blot analysis of Jurkat cell lin...