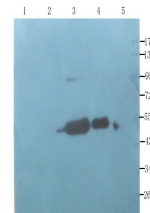


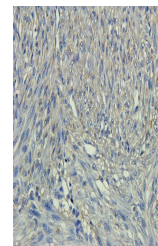
Product Datasheet

CD133E1 antibody (orb339617)

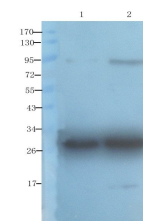
Description	CD133E1 antibody
Species/Host	Rabbit
Reactivity	Human, Rat
Conjugation	Unconjugated
Tested Applications	IHC-P, WB
Immunogen	Recombinant protein
Target	CD133E1
Form/Appearance	10 mM PBS, 0.02% sodium azide
Concentration	- 100 µg (in 200 µl): 0.5 mg/ml- 200 µg (in 400 µl): 0.5 mg/ml
Storage	Store at 4°C for up to two weeks. For long term storage, aliquot and store at -20°C, avoid freeze/thaw cycles.
Note	For research use only
Isotype	IgG
Clonality	Polyclonal
Purity	Polyclonal antibodies are purified by peptide affinity chromatography
MW	97 kDa
Dilution Range	IHC-P: 1:100-300, WB: 1:100-2000
Expiration Date	12 months from date of receipt.



WB analysis of rat small intestines (lan...



IHC-P staining of human endometrial canc...



Western blot analysis of CD133E1 protein...