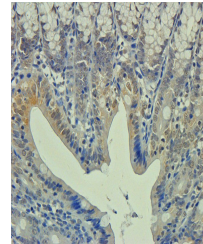


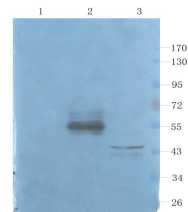
## Product Datasheet

### Apolipoprotein E antibody (orb339614)

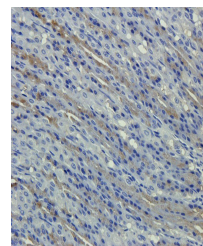
<b>Description</b>	Apolipoprotein E antibody
<b>Species/Host</b>	Rabbit
<b>Reactivity</b>	Human, Rat
<b>Conjugation</b>	Unconjugated
<b>Tested Applications</b>	IHC-P, WB
<b>Immunogen</b>	Recombinant human APOE-2 protein. The protein is available as (orb315534) was used as immunogen.
<b>Target</b>	Apolipoprotein E
<b>Form/Appearance</b>	10 mM PBS, 0.02% sodium azide
<b>Concentration</b>	- 100 µg (in 200 µl): 0.5 mg/ml- 200 µg (in 400 µl): 0.5 mg/ml
<b>Storage</b>	Store at 4°C for up to two weeks. For long term storage, aliquot and store at -20°C, avoid freeze/thaw cycles.
<b>Note</b>	For research use only
<b>Isotype</b>	IgG
<b>Clonality</b>	Polyclonal
<b>Purity</b>	Polyclonal antibodies are purified by peptide affinity chromatography
<b>MW</b>	36 kDa
<b>Dilution Range</b>	IHC-P: 1:100-500, WB: 1:100-2000
<b>Expiration Date</b>	12 months from date of receipt.



IHC-P image of rat colon tissue using an...



WB analysis of rat lung (lane 1), rat ki...



Immunohistochemical staining of rat stom...