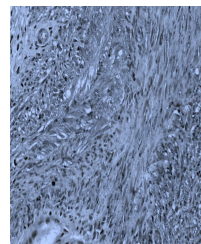


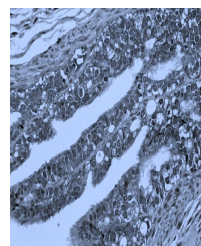
Product Datasheet

PEDF antibody (orb339611)

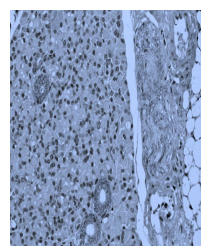
Description	PEDF antibody
Species/Host	Rabbit
Reactivity	Human, Mouse, Rat
Conjugation	Unconjugated
Tested Applications	IHC-P, WB
Immunogen	Recombinant human PEDF protein. The protein is available as (orb315544) was used as immunogen.
Target	PEDF
Form/Appearance	10 mM PBS, 0.02% sodium azide
Concentration	- 100 µg (in 200 µl): 0.5 mg/ml- 200 µg (in 400 µl): 0.5 mg/ml
Storage	Store at 4°C for up to two weeks. For long term storage, aliquot and store at -20°C, avoid freeze/thaw cycles.
Note	For research use only
Isotype	IgG
Clonality	Polyclonal
Purity	Polyclonal antibodies are purified by peptide affinity chromatography
MW	46 kDa
Dilution Range	WB: 1:100:2000, IHC-P: 1:100-1000
Expiration Date	12 months from date of receipt.



Immunohistochemical staining of rat ovar...



IHC-P image of rat ovary tissue using an...



IHC-P staining of mouse lymph node tissu...