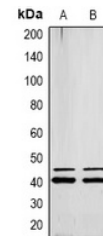


Product Datasheet

ERK1/2 (phospho-Y222/205) antibody (orb338969)

Description	Rabbit polyclonal antibody to ERK1/2
Species/Host	Rabbit
Reactivity	Human, Mouse, Rat, Zebrafish
Conjugation	Unconjugated
Tested Applications	WB
Immunogen	KLH-conjugated synthetic phosphopeptide corresponding to residues surrounding Y222/205 of human ERK1/2 protein. The exact sequence is proprietary.
Target	MAPK1; MAPK3
Preservatives	Liquid in 0.42% Potassium phosphate, 0.87% Sodium chloride, pH 7.3, 30% glycerol, and 0.01% sodium azide.
Form/Appearance	Liquid in 0.42% Potassium phosphate, 0.87% Sodium chloride, pH 7.3, 30% glycerol, and 0.01% sodium azide.
Storage	Maintain refrigerated at 2-8°C for up to 2 weeks. For long term storage store at -20°C in small aliquots to prevent freeze-thaw cycles.
Note	For research use only
Clonality	Polyclonal
Source	Rabbit
Uniprot ID	P21708, P63085, P28482, P63086, P27361, Q63844
Entrez	26417, 26413, 5595, 50689, 5594, 116590
Dilution Range	WB: 1:500-1000
Expiration Date	12 months from date of receipt.



Western blot analysis of ERK1/2 (Phospho...