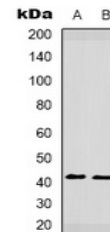


Product Datasheet

CCR5 (phospho-S349) antibody (orb338956)

Description	Rabbit polyclonal antibody to CCR5
Species/Host	Rabbit
Reactivity	Human, Mouse, Primate, Rabbit
Conjugation	Unconjugated
Tested Applications	WB
Immunogen	KLH-conjugated synthetic phosphopeptide corresponding to residues surrounding S349 of human CCR5 protein. The exact sequence is proprietary.
Target	CCR5
Preservatives	Liquid in 0.42% Potassium phosphate, 0.87% Sodium chloride, pH 7.3, 30% glycerol, and 0.01% sodium azide.
Form/Appearance	Liquid in 0.42% Potassium phosphate, 0.87% Sodium chloride, pH 7.3, 30% glycerol, and 0.01% sodium azide.
Storage	Maintain refrigerated at 2-8°C for up to 2 weeks. For long term storage store at -20°C in small aliquots to prevent freeze-thaw cycles.
Note	For research use only
Clonality	Polyclonal
Source	Rabbit
Uniprot ID	P51682, P51681
Entrez	12774, 1234
Dilution Range	WB: 1:500-1000
Expiration Date	12 months from date of receipt.



Western blot analysis of CCR5 (Phospho-S349) antibody.