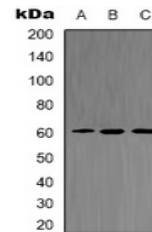


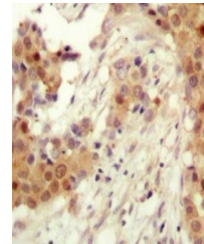
Product Datasheet

AKT2 (phospho-S474) antibody (orb338945)

Description	Rabbit polyclonal antibody to AKT2
Species/Host	Rabbit
Reactivity	Human, Mouse, Rat
Conjugation	Unconjugated
Tested Applications	IH, WB
Immunogen	KLH-conjugated synthetic phosphopeptide corresponding to residues surrounding S474 of human AKT2 protein. The exact sequence is proprietary.
Target	AKT2
Preservatives	Liquid in 0.42% Potassium phosphate, 0.87% Sodium chloride, pH 7.3, 30% glycerol, and 0.01% sodium azide.
Form/Appearance	Liquid in 0.42% Potassium phosphate, 0.87% Sodium chloride, pH 7.3, 30% glycerol, and 0.01% sodium azide.
Storage	Maintain refrigerated at 2-8°C for up to 2 weeks. For long term storage store at -20°C in small aliquots to prevent freeze-thaw cycles.
Note	For research use only
Clonality	Polyclonal
Source	Rabbit
Uniprot ID	P47197 , P31751 , Q60823
Entrez	11652 , 208 , 25233
Dilution Range	WB: 1:500-1000, IHC-P: 1:100-200
Expiration Date	12 months from date of receipt.



Western blot analysis of AKT2 (Phospho-S...



Immunohistochemical analysis of AKT2 (Ph...